

**A Thursday evening social event will be planned for those that are arriving Thursday evening. Please check the MAPA website for details.**

## Course Agenda

### Day 1 – Friday, May 30, 2008

7:30- 8:15AM REGISTRATION AND CONTINENTAL BREAKFAST

8:15-8:30AM WELCOME AND INTRODUCTION

8:30-9:30AM The Lung – What Should You Be Thinking, What You Should Be Doing and Why?  
Leslie Litzky, MD  
University of PA Health System

The general topic of Pulmonary Pathology and pulmonary specimen processing with special attention to recent issues in lung cancer.

9:30-9:40AM BREAK

9:40-10:40AM Tungiasis  
Kevin Hirokawa, PA(ASCP)  
University of PA Health System

Tungiasis is a disease predominantly of the southern hemisphere. It is believed to have originated in South America, and migrated to Africa and Southern Asia in the late 1800's and early 1900's. With the advent of greater tourism in these areas, it is slowly becoming a more common finding in northern hemisphere countries. This lecture will focus on the clinical presentation, pathological gross and histological findings, and treatment options.

10:40-11:00AM BREAK

11:00-12:00PM Important Aspect of the External Examination  
Gary Collins, MD  
Assistant Medical Examiner, Philadelphia, PA

To understand the important aspects of the external examination in a medico legal (forensic) postmortem examination.

12:00-1:00PM LUNCH

1:00-2:00PM Update on Digital Imaging Technology  
Michael Feldman, MD, PhD  
University of PA Health System

This lecture will provide an overview of current imaging techniques used in the pathology gross lab. Applications of current technology will be reviewed, and future imaging technologies will be discussed.

2:00-2:10PM BREAK

2:10-3:10PM The Making of a Pandemic: Bubonic Plague in the 14<sup>th</sup> Century  
James T. Eastman III, MD

We will explore the various factors and events that seem to have occurred to initiate the “Perfect Infectious Storm”. In addition we will look at some of the socioeconomic, political, and religious effects which this catastrophe of this magnitude may have had. The study of such a far-reaching cataclysm presents to us with challenging questions and opportunities. To the extent that we can know and understand these events in the 14<sup>th</sup> century, it may enable us to more successfully deal with our current pandemic. Finally, one can hope that such an understanding can help prepare us to prevent or mitigate future pandemics.

3:10-4:10PM Approach to the Luminal GI Tract  
Emma Furth, MD  
University of PA Health System

This lecture will focus on the key gross features of idiopathic inflammatory bowel disease within the lumen of the gastrointestinal tract. The discussion will include the discrimination of inflammatory bowel disease and other processes which mimic the findings of IBD. Proper handling, including photography and sectioning techniques, will be discussed.

**The Department of Anatomic Pathology and Laboratory Medicine would like to welcome the attendees of the MAPA 2008 conference to the University of Pennsylvania. A reception will be held at the College of Physicians and Mutter Museum on Friday, May 30, 2008, 5-8:00 p.m.**

### Day 2 – Saturday, May 31, 2008

8:00- 8:25AM REGISTRATION AND CONTINENTAL BREAKFAST

8:25-8:30AM WELCOME AND INTRODUCTION

8:30-9:30AM Molecular Advances in Surgical Pathology: New technologies and the gross room  
Antonia Sepulveda, MD, PhD  
University of PA Health System

This session will focus on new and emerging molecular technologies that impact on the practice of surgical pathology. Microarray testing for global gene expression, microRNA analysis, and approaches used for mutation detection and genomic profiling will be reviewed. The application of these new technologies for tumor diagnosis, prognosis, and targeted treatment selection, and molecular methods for specimen identity testing will be discussed.

9:30-9:45AM BREAK

9:45-10:45AM Thyroid Cancer: The Legacy of Chernobyl  
Virginia LiVolsi, MD  
University of PA Health System

The lecture will review the 22 year experience with pediatric thyroid cancers in affected countries after the Chernobyl nuclear

accident. The histopathology, molecular biology and prognostic data will be illustrated and discussed.

10:45-11:00AM BREAK

11:00-12:00PM Diagnostic Imaging in Surgical Pathology - Where Are We Going?  
John E. Tomaszewski, MD  
University of PA Health System

Diagnostic imaging in Surgical Pathology is primed for revolutionary changes. Image data of the future will be high dimensional, scaled, and quantitative. Computer assisted diagnosis will become a common paradigm. The collection of high resolution images by minimally invasive techniques will begin to blur the boundary between surgical pathology and radiology.

12:00-1:00PM LUNCH

1:00-2:00PM Pediatric Autopsy  
Linda Ernst, MD  
Children’s Hosp of Philadelphia

Discussion of major pathologic processes leading to fetal and neonatal death with emphasis on common malformation syndromes. Common morbidities associated with prematurity will also be discussed.

2:00-2:10PM BREAK

2:10-3:10PM Tina Rader (PA(ASCP))  
Co-Director, Pathologists’ Assistants Program, Drexel University College of Medicine

The Other Emboli  
Brooke Walsh, PA Student

All too often when we think of pulmonary embolism we think of thromboembolism, but material other than blood clot could be responsible. The entities discussed here: fat embolism, air embolism, tumor embolism, and amniotic fluid embolism are uncommon disorders that occur in specific clinical settings.

Erroneous Blood Glucose Measurements by Hand-Held Devices in Diabetic Patients Undergoing Peritoneal Dialysis  
Chevanne Akanbi, PA Student

Outline the pathogenesis of Diabetes, its systemic effects and progression for some to renal failure. With renal function compromise arises the need to use dialysis, with both hemodialysis and peritoneal dialysis theories explained. From there, the issue of continued blood glucose monitoring of diabetic patients on peritoneal dialysis with seemingly ubiquitous hand-held units will be outlined in terms of morbid consequences.

### MAPA Director

Jason Balliet, PA(ASCP)<sup>cm</sup>

### MAPA 2008 Conference Co-chairs

Carolyn Culin, PA(ASCP)<sup>cm</sup>  
Kevin Hirokawa, PA(ASCP)<sup>cm</sup>  
Hospital of the University of Pennsylvania  
Philadelphia, PA

### Committee Members

Joseph DiRienzi, PA(ASCP)<sup>cm</sup>  
Igor Tsimberg, PA(ASCP)<sup>cm</sup>  
Hospital of the University of Pennsylvania  
Philadelphia, PA

### Target Audience

This program is designed for Pathologists' Assistants.

*Upon completion of the course participants should be able to:*

- Describe some of the identifying characteristics of genetic and environmentally imposed disease processes
- Discuss

### Accreditation

The Midatlantic Association of Pathologists' Assistants (MAPA) is accredited by ASCLS PACE to provide continuing medical education for pathologists' assistants.

### Designation of Credit

MAPA designates this educational activity for a maximum of *11 certification maintenance program credits*. Attendees should only claim credit commensurate with the extent of their participation in the activity.

### Disclosures

MAPA adheres to the ASCLS Standards for Commercial Support. Faculty disclosure information will be made available during the activity. Faculty members are also expected to disclose to participants any discussion of off-label and/or investigational use of pharmaceutical products or devices during their presentations.

### Course Registration:

It is strongly recommended that you register early for this program. Registration is due by **April 15, 2008**. If registering after April 15, 2008, please include a late registration fee of **\$25**. Registrations will be accepted on a first come, first served basis according to the date registration forms and payments are received.

### Standard Registration Fees:

All Lectures, includes lunch and snacks  
\$110 for Pathologists' Assistants for both days  
\$60 for Pathologists' Assistants for one day  
\$60 for students for both days  
\$35 for students for one day

### Course Cancellation Policy

MAPA reserves the right to cancel or postpone any course due to unforeseen circumstances. In the event of cancellation or postponement by MAPA, we will refund registration fees, but are not responsible for any related costs, charges or expenses to participants, including cancellation fees assessed by airlines, travel agencies and hotels. If a participant must cancel his/her course registration, he or she may receive a refund if written notification is sent by **April 15, 2008**. Refunds will not be processed after this date. All refunds are subject to a **\$25.00 cancellation fee**. Please fax or email your cancellation notification to Jason Balliet at [JBallie@LancasterGeneral.org](mailto:JBallie@LancasterGeneral.org).

### Hotel Accommodations

Rooms are available at the Sheraton University City for **Thursday, May 29, 2008 through Saturday, May 30, 2008** at a special meeting rate of **\$180** per night (single or double) plus tax. Reservations can be made by calling (877) 459-1146.

When making reservations be certain to identify yourself as a participant of the MAPA conference. **Please book your reservations by April 29, 2008.**

Rooms are also available in the downtown area of Philadelphia at **Club Quarters**. Please call (215) 282-5000. Basic rooms are available for **\$99** per night and standard rooms for **\$114** per night. Please identify that you are attending a conference at the University of PA.

### For More Information:

**Contact Carolyn Culin or Kevin Hirokawa**  
**Department of Pathology and Lab Medicine**

**Phone: 215-662-6526**

**E-mail: [Carolyn.Culin@uphs.upenn.edu](mailto:Carolyn.Culin@uphs.upenn.edu)**

**[Kevin.Hirokawa@uphs.upenn.edu](mailto:Kevin.Hirokawa@uphs.upenn.edu)**

**Web site: <http://www.midatlanticpas.org>**

**To Register, please visit the Mid-Atlantic Pathologists' website at**

**<http://www.midatlanticpas.org>**



Mid Atlantic  
Pathologists' Assistants

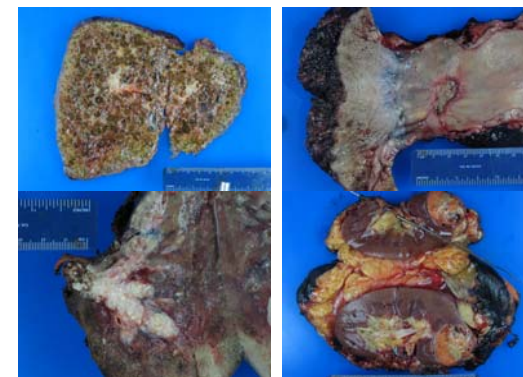
## The Third Annual MAPA Continuing Education Conference

Presents

## Environment vs. Genetics As Origins for Disease

**May 30-31, 2008**

A PACE-Certified Course



**The University Of Pennsylvania**  
**Logan Hall, G-17**  
**249 South 36th Street**  
**Philadelphia, PA 19104**